



Villa Series

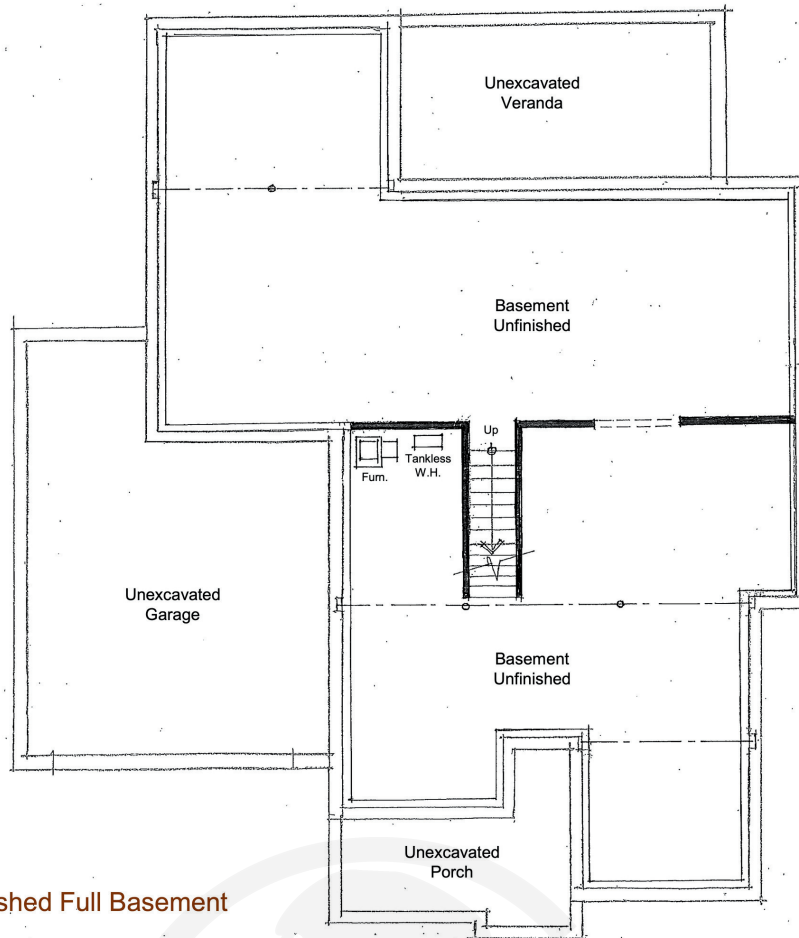
WOODS EDGE



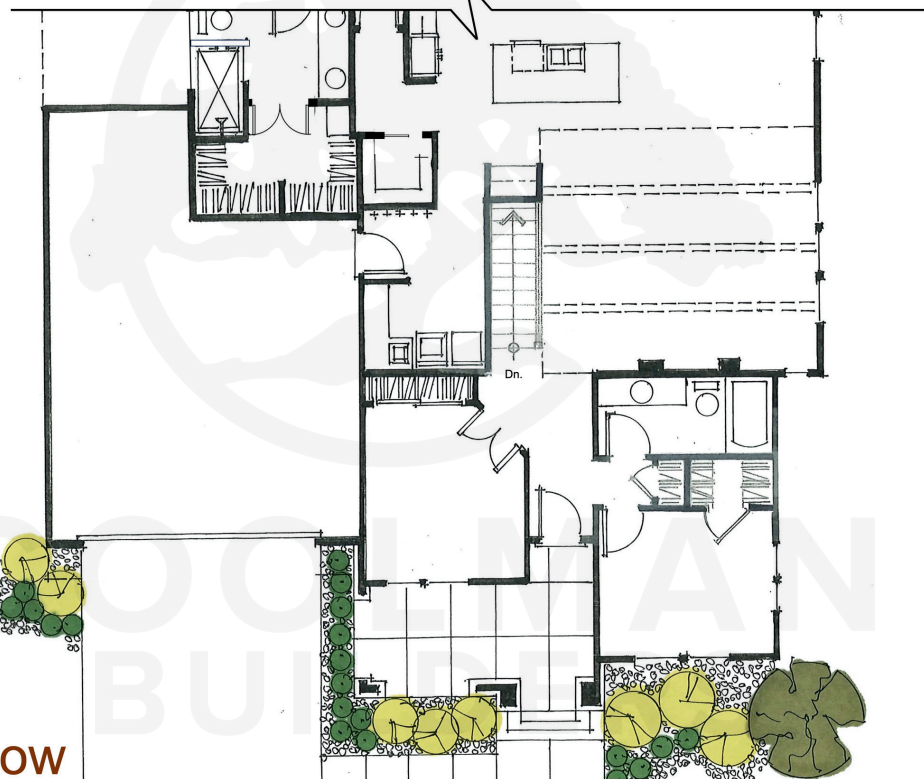
The Willow

Modern Farmhouse Style

Some items on the rendered plans and elevations are optional, please consult with a sales associate.
Landscaping is shown for illustrative purposes only.



Optional Unfinished Full Basement



The Willow

THE WILLOW - MODERN FARMHOUSE

-

Model Home Upgrades & Designer Selections 50 Woods Edge Way (Lot A12)

Exterior

This Willow Modern Farmhouse model features upgraded 2x6 construction with impressive 10' ceilings and upgraded 5-panel 8' interior doors. The exterior includes a covered veranda with a spacious 21' x 8' grilling patio and a stunning Heat-N-Glo 6000-K gas fireplace with stained wood mantel and dedicated gas line. Additional exterior enhancements include cedar valley 7" LP shingle accents on the front elevation, stone accents extending to the garage foundation and under cedar areas, and optional front and exposed side elevations. The garage includes a service door, a 9' x 10' hobby space extension, and a 637 sq ft epoxy-coated floor. The yard is completed with full lawn irrigation and sod.

Basement Option Added w/Changes

The finished basement is designed for entertaining and comfortable living, featuring a kitchenette with quartz countertops, a floating wood shelf above base cabinets, and a beverage refrigerator with Grove Midnight cabinetry. The staircase wall showcases a vertical board and batten trim accent painted in Sherwin Williams Extra White (SW7005). The basement bathroom includes a Denah round black metal frame mirror (30"), sconces on each side of the mirror and a modern disc light above the sink. The recreation and TV area features flood paint in Sherwin Williams Cocoon (SW6173).

Misc. Interior

Interior upgrades include elegant 5-panel door styling (8' door height included w/10' ceiling cost), and a custom staircase balustrade featuring horizontal iron balusters with an iron handrail and newels. The great room fireplace has been upgraded to a SimpliFire Allusion Platinum 60" electric fireplace with a dramatic vertical shiplap surround and the standard mantel removed for a cleaner modern look. A fluted wood acoustic wall panel in Avana Rustic Oak premium veneer creates a striking vertical feature wall at the fireplace. Bedroom three (study) is flooded with Sherwin Williams color Hardware (SW6172). Designer lighting upgrades are installed throughout the home.

Laundry

The laundry room includes an upgraded Ruvati 25" epiRock workstation undermount sink and a shiplap accent coat-hook wall with coordinating base trim painted in Sherwin Williams Muddled Basil (SW7745).

THE WILLOW - MODERN FARMHOUSE

-

Model Home Upgrades & Designer Selections 50 Woods Edge Way (Lot A12)

Kitchen

The kitchen layout has been redesigned to allow for a third window, bringing in additional natural light. Cabinetry features Grove Chateau on the upper and lowers of the perimeter and Grove Midnight on the island for a sophisticated two-tone look. A classic white farmhouse sink is paired with a Quartz Calcatta Leon backsplash with a 2cm thickness and a decorative 4½" deep shelf above the range and below the hood. Three sconce lights are installed over the windows, and the kitchen is equipped with Bosch refrigerator and range appliances.

Master Bedroom

The master bedroom has been flooded with Sherwin Williams color Honed Soapstone (SW9126) and the standard fan has been replaced with a chandelier for a more refined aesthetic. Flooring has been upgraded by removing carpet and installing luxury vinyl flooring, while the master bath and closet transitions to ceramic tile flooring with laminate shelving installed for organization.

Master Bath

The master bathroom includes plated mirrors with a black rim. Plumbing fixtures are upgraded to Delta 3533 widespread faucets with 8" on centers and pendant lighting is installed over the sinks. The ceramic tiled shower design has been updated by removing the interior wall and installing a 32" x 8' glass panel trimmed in black.

Guest Bath

The guest bathroom features decorative wall sconces placed on both sides of the Wayfair Sabine mirror with a disc light above the sink. The standard tub and shower have been upgraded to a garden tub with Roca White Ice Bright tile installed in a herringbone pattern extending to the ceiling.

For information & private appointment contact
Carol Mazzaro- TEXT (219) 789-8691 or call (219) 464-7510